

2010 Clean Air Plan

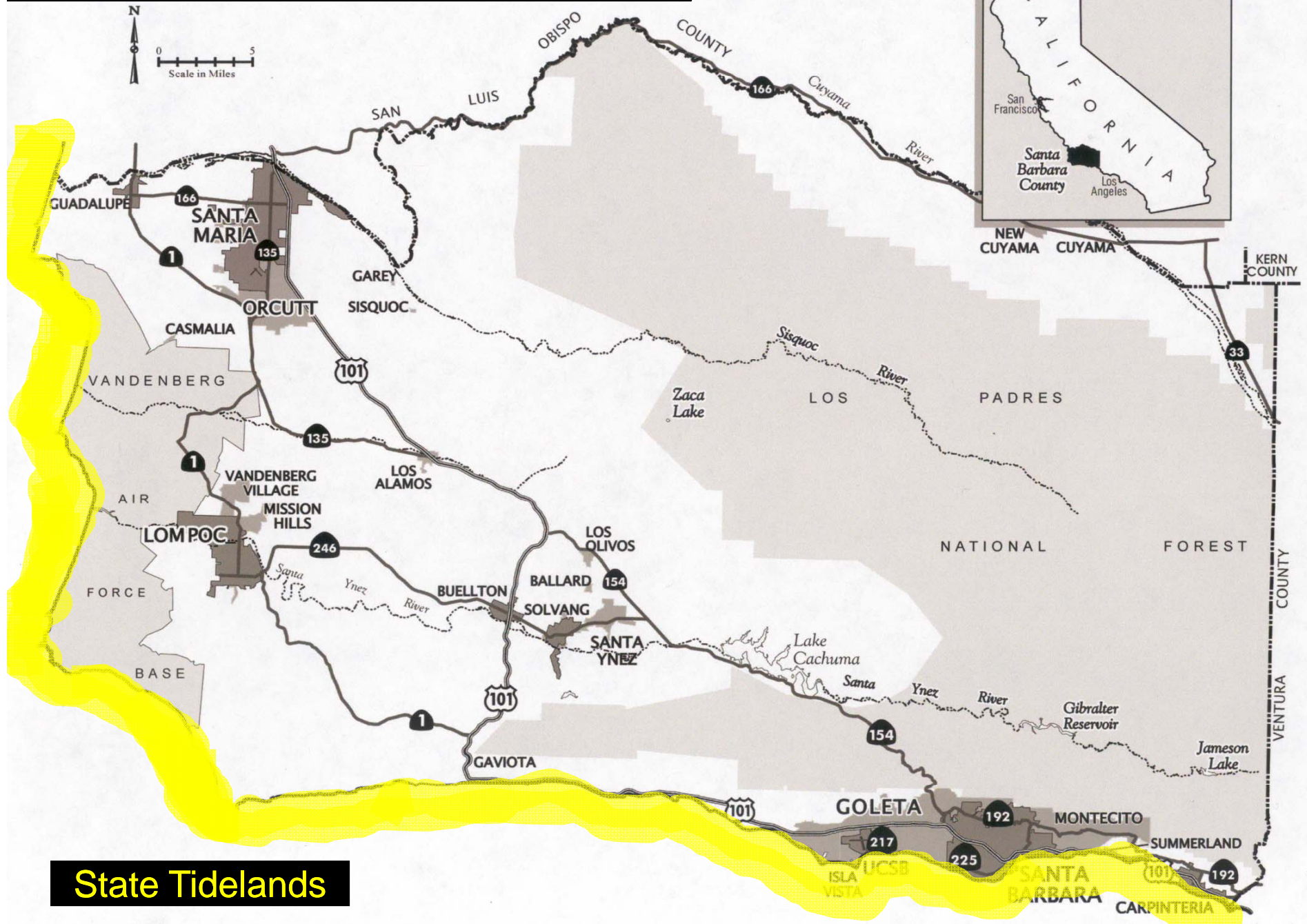
Chapter 3: Emission Inventory

Joe Petrini - SBCAPCD

Purpose of Emission Inventory in 2010 Plan

- Estimate Emissions From Various Source Types
 - Reactive Organic Compounds (ROC)
 - Oxides of Nitrogen (NO_x)
- Baseline to Evaluate Control Measures (Chapter 4)
- Forecast Future Emissions (Chapter 6)
 - Baseline of 2007
 - Activity Indicators
 - Control Factors

Santa Barbara County Air Basin



State Tidelands



Annual/Planning Inventories

- 2007 Base Year Annual Inventory
 - Includes All Sources of Emissions
 - Units of tons per year
- 2007 Planning Inventory
 - Excludes Natural Sources
 - Converted to tons per day

Emission Inventory Groupings

- **Stationary Sources**
 - Generally Permitted sources
- **Area-Wide Sources**
 - Unpermitted Sources
- **Mobile (On-road and Other Mobile)**
 - Cars, trucks, etc. and off-road mobile sources
- **Natural Sources**
 - Seeps, wildfires, biogenics (vegetation)

Sources of Emissions - Subcategories

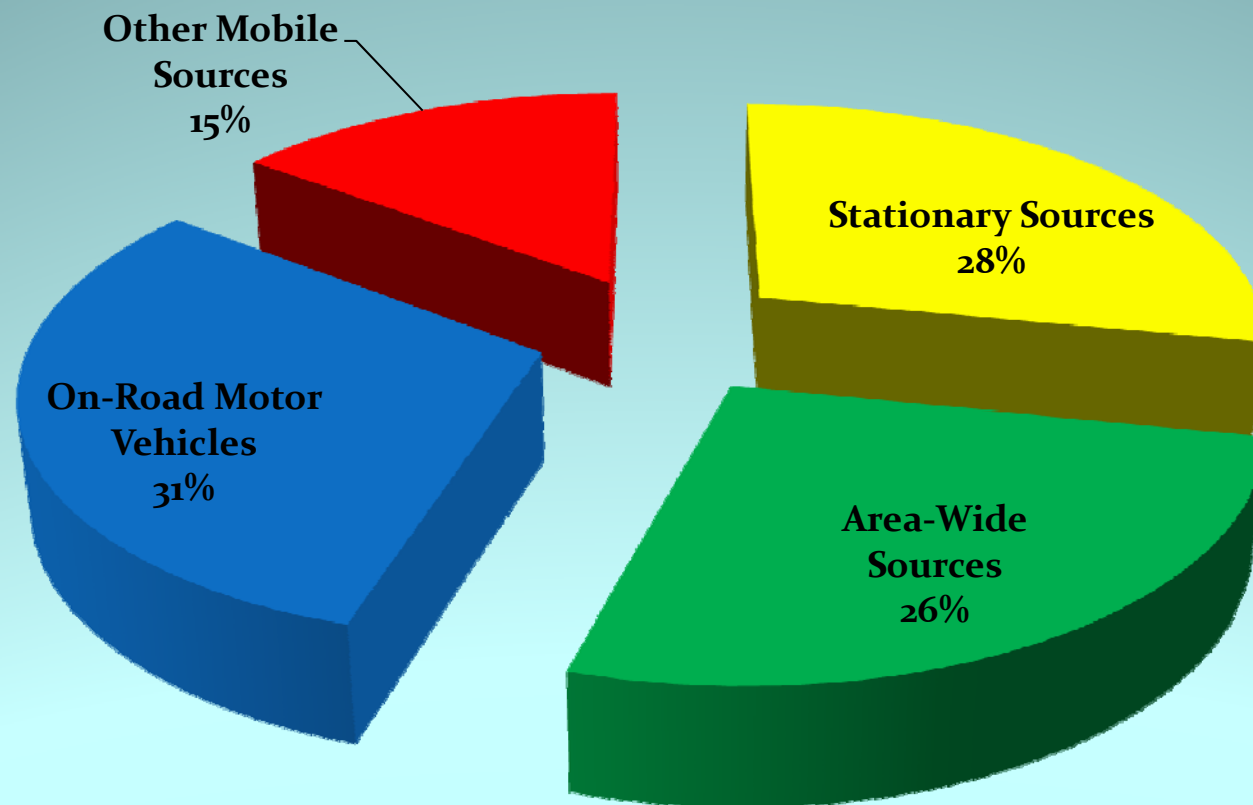
- **Stationary Sources** (Fuel Combustion, Waste Disposal, Cleaning and Surface Coatings, Petroleum Production and Marketing, Industrial Processes)
- **Area-Wide Sources** (Solvent Evaporation, Miscellaneous)
- **Mobile Sources** (On-Road, Other Mobile)
- **Natural Sources** (Seeps, Wildfires and Biogenics)

Onshore Planning Emissions

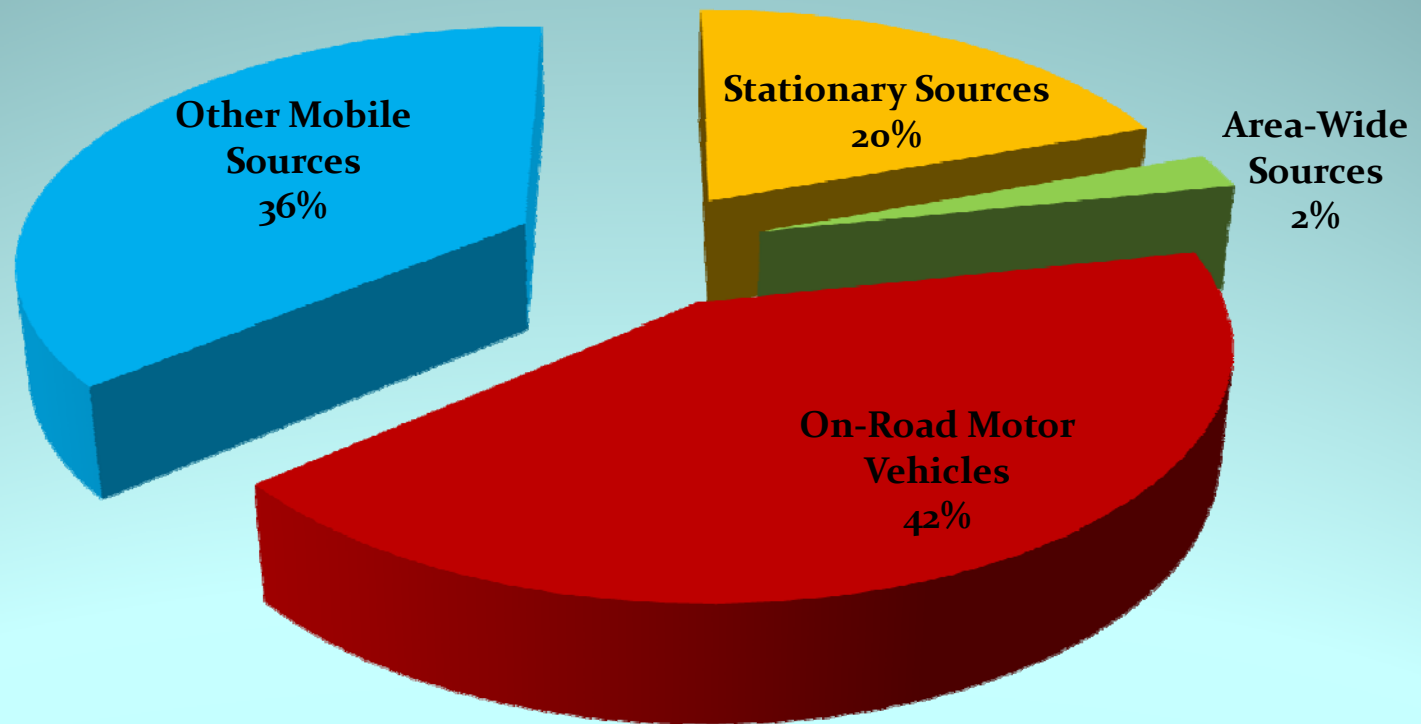
ROC and NOx

	ROC (tpd)	NOx (tpd)
Stationary Sources	8.85	7.60
Area-Wide Sources	8.36	0.91
On-Road Mobile Sources	9.66	16.54
Other Mobile Sources	4.64	14.21
Total	31.51	39.26

Onshore Planning ROC Emissions



Onshore Planning NOx Emissions

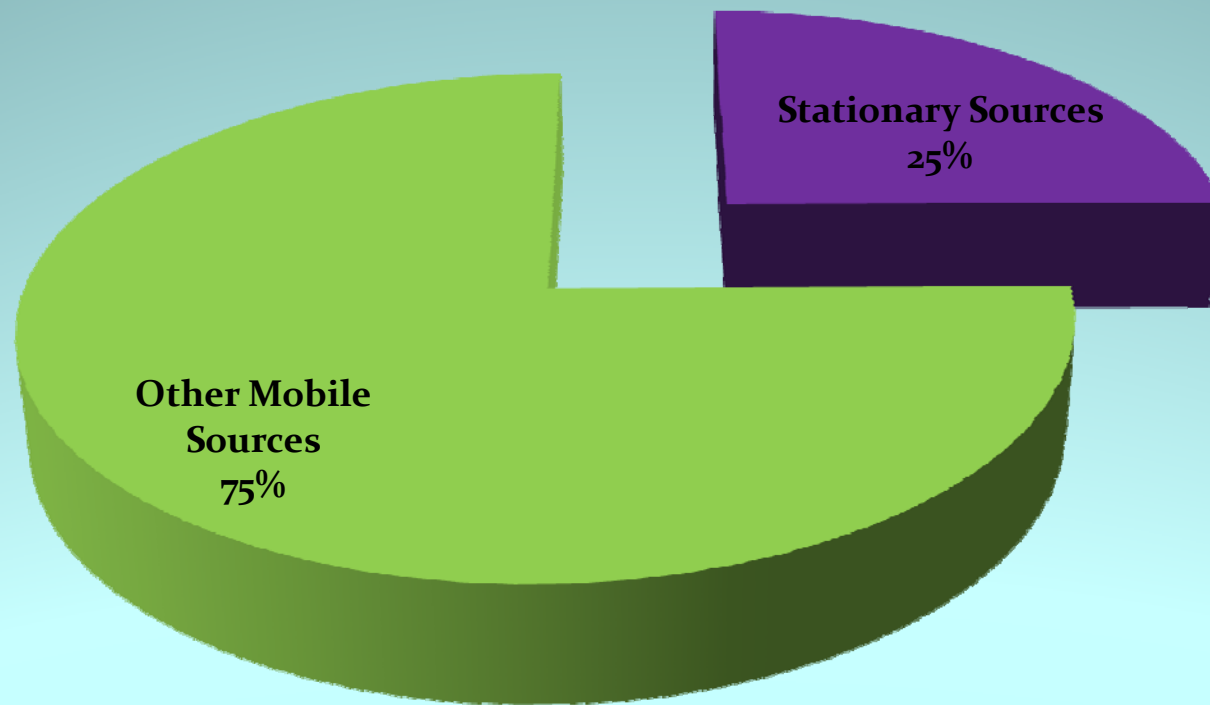


OCS Planning Emissions

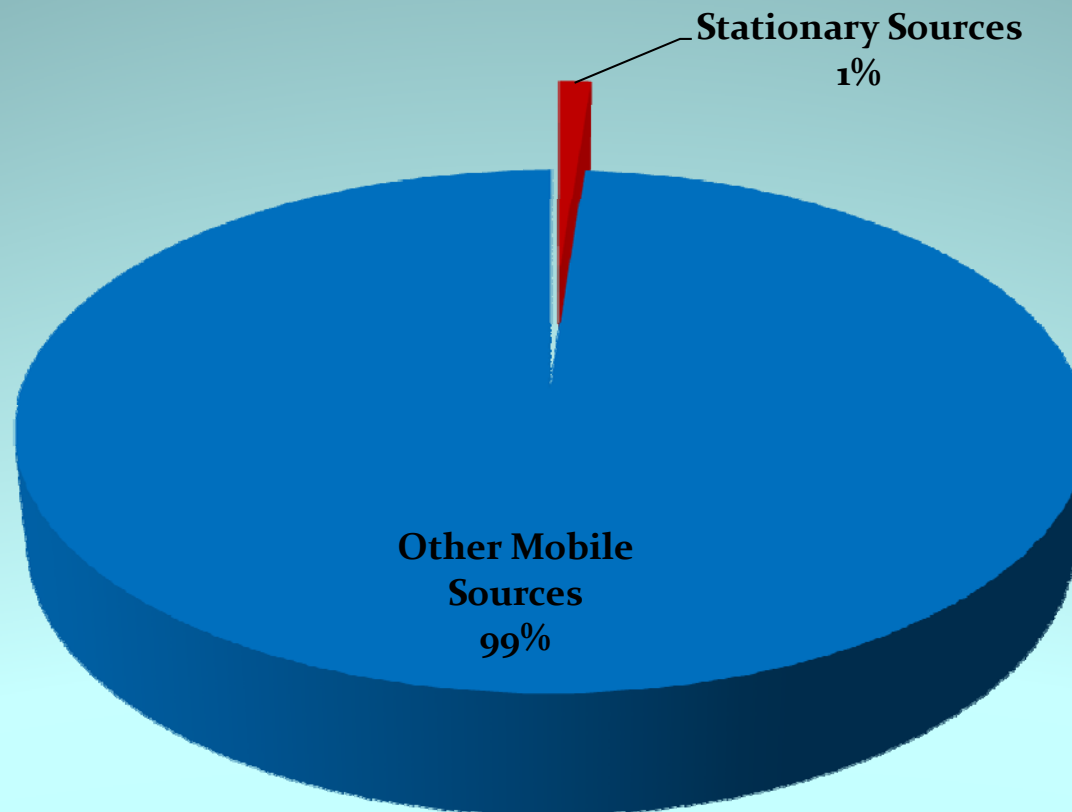
ROC and NOx

	ROC (tpd)	NOx (tpd)
Stationary Sources	0.83	0.58
Other Mobile Sources	2.51	49.36
Total	3.34	49.94

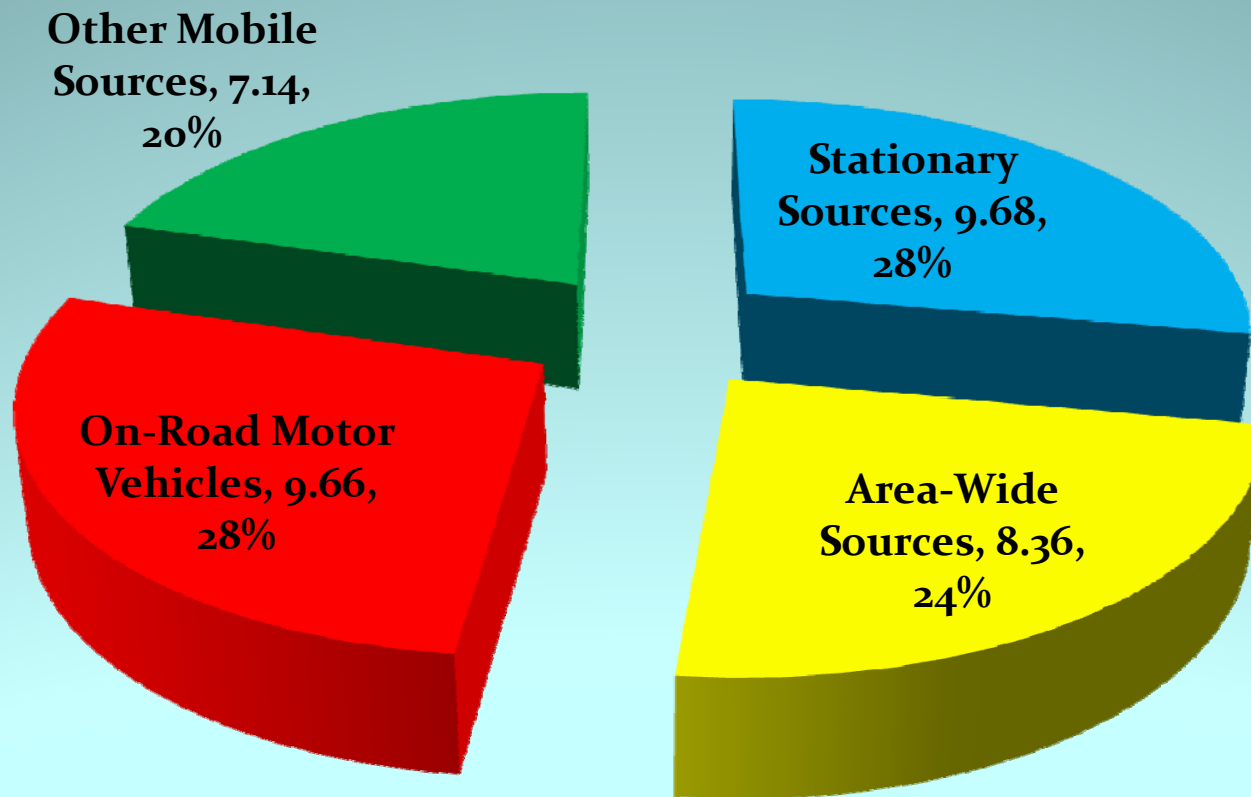
OCS Planning ROC Emissions



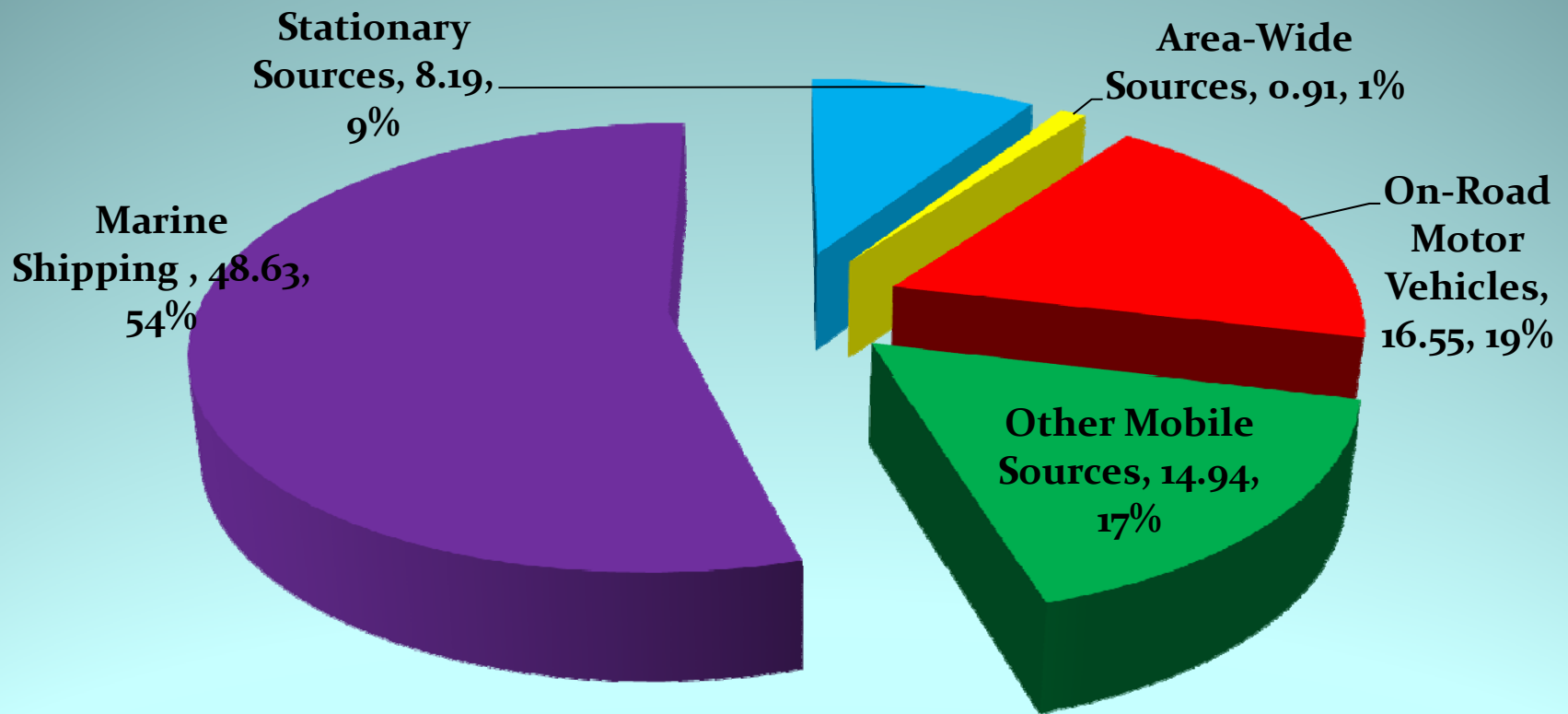
OCS Planning NOx Emissions



Combined OCS and Onshore Inventory Planning ROC Emissions



Combined OCS and Onshore Inventory Planning NOx Emissions



Natural Sources

- Excluded from Planning Inventory
 - Biogenic (vegetation)
 - Geogenic (seeps)
 - Wildfires
 - 47,379 tons per year ROC = 80% of onshore total
 - 48% biogenics (vegetation) – 22,533 tpy
 - 38% wildfires - 18,060 tpy
 - 14% seeps – 6,786 tpy
- Wildfire Emissions 2007 - Zaca Fire (240,000 acres)
- Wildfire Emission zero in 2007 Plan (2002)

Marine Shipping Routes

